

VECTOR III® SPACEMAKERS™

THE PATENTED **SLIDE AND GRIP** ATTACHMENT REDUCES THE TENDENCY OF ANTERIOR TEETH TO TIP AND MOVE OUT OF THE ANTERIOR LABIAL BONE AND FURTHER REDUCES THE SIDE EFFECTS OF TIPPING, ROTATING ETC.

WHEN USED IN AREAS OF IMPACTED UPPER CUSPIDS IT TENDS TO SIGNIFICANTLY IMPROVE THEIR POSITION PRIOR TO SURGICAL INTERVENTION. THE SURGICAL PROCEDURE OF MAKING AN ATTACHMENT IS ENHANCED AND RISK TO ADJACENT TEETH IS FURTHER REDUCED.

USER FRIENDLY FOR THE PATIENT, DOCTOR AND STAFF. THE DESIGN REDUCES THE NECESSITY FOR ADJUSTMENT TO ACHIEVE PATIENT SOFT TISSUE COMFORT. HOWEVER **VECTOR III® COTTON COMFORT STRIPS™** ARE AVAILABLE TO ADDRESS ANY POSSIBLE PROBLEMS UNTIL THE PATIENTS' NEXT APPOINTMENT.

VECTOR III® Add-A-Hooks™ are made with the exclusive wire **VECTORLOY™** that is specially formulated and specifically heat-treated to retain its' shape and configuration while still giving it superior flex and force control.



Enlargement



MANUFACTURED FOR;
VECTOR III®, LLC
303 E. Dells Rd.
Silver Lake, WI 53170
262-763-5023
fax 262-763-5737
www.VECTORIIIORTHO.com

VECTOR III® 2016
ALL RIGHTS RESERVED

SPACEMAKERS™

U. S. Patent #5,984,675

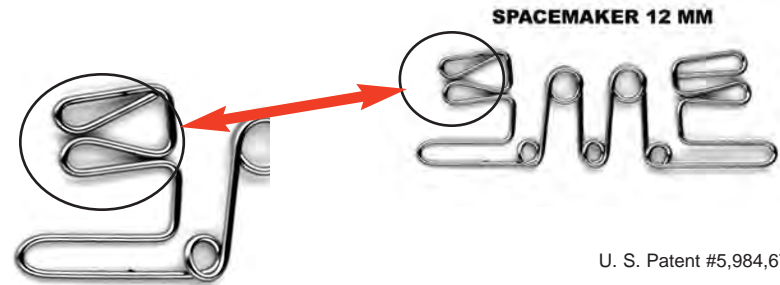
FEATURES;

THE PATENTED **SLIDE AND GRIP** ATTACHMENT AFFORDS EASE OF PLACEMENT OVER MOST COMMONLY USED CONVENTIONAL BRACKETS.

IT IS NOT NECESSARY TO TIE IN OR REMOVE THE WIRE.

INTERACTS WITH THE PRIMARY ARCH WIRE AND THE APPLIANCES IN A HORIZONTAL VECTOR, MOVING THE **ROOTS AND THE CROWNS** FOR CONTROL.

MAKES SPACE FOR IMPACTED TEETH IN AN ARCH WHILE MOVING THE ROOTS AND CROWNS **AWAY** FROM THE IMPACTED TOOTH.



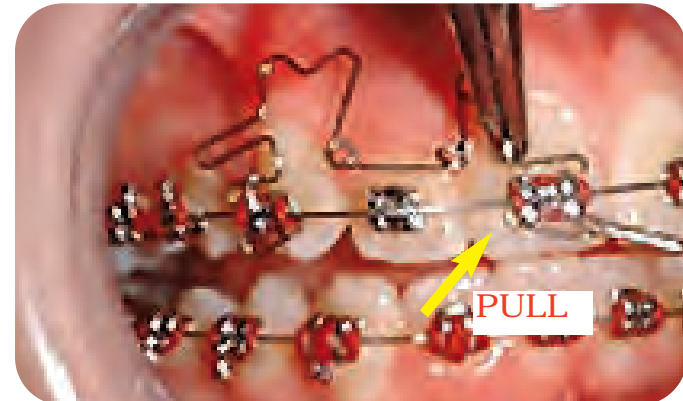
U. S. Patent #5,984,675

AVAILABLE IN THREE SIZES;

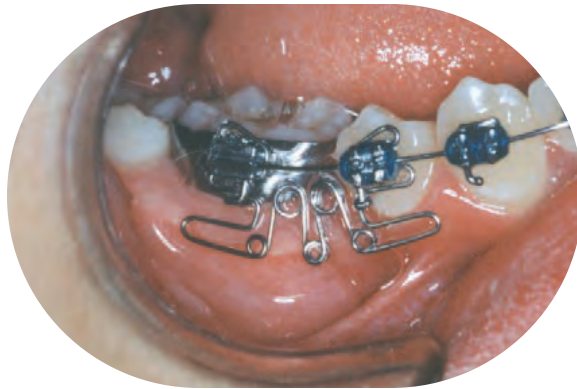
12 MM, 16 MM & 20 MM. IN PACKAGES OF 5 EACH FOR \$98.50

OR AS AN ASSORTMENT OF;

2 EA. 12 MM AND 16 MM & 1 EA. 20 MM FOR \$98.50



VIEW OF 12 MM **SPACEMAKER™**



EXAMPLE OF VECTOR III® SPACEMAKERS™ 16 MM



A. R.

START 10-13-00



PROGRESS 11-17-00

1 MONTH & 4 DAYS

THE **VECTOR III® SPACEMAKERS™** MADE AMPLE SPACE FOR THIS BI-CUSPID IN **1 MONTH & 4 DAYS**.

WHEN THESE X-RAYS WERE SHOWN TO THE MOTHER SHE SAID "THAT IS FANTASTIC". MOTHERS ARE GIVEN TOO LITTLE CREDIT FOR BEING ABLE TO INTERPRET HOW AN X-RAY LOOKS. THEY ARE NOT ONLY ABLE TO SEE HOW WELL THE TOOTH MOVED BUT ALSO THAT THE BONE HAS MOVED ALONG WITH THE TOOTH.

VIEW OF 16 MM **SPACEMAKER™**



VECTOR III® SPACEMAKERS™ ON BI-CUSPID

START PHOTOS



H. H.



START X-RAY

PROGRESS X-RAY
1 MONTH 6 DAYS



VIEW OF 20 MM **SPACEMAKER™**



See more treated cases at www.VECTORIIIORTHO.com